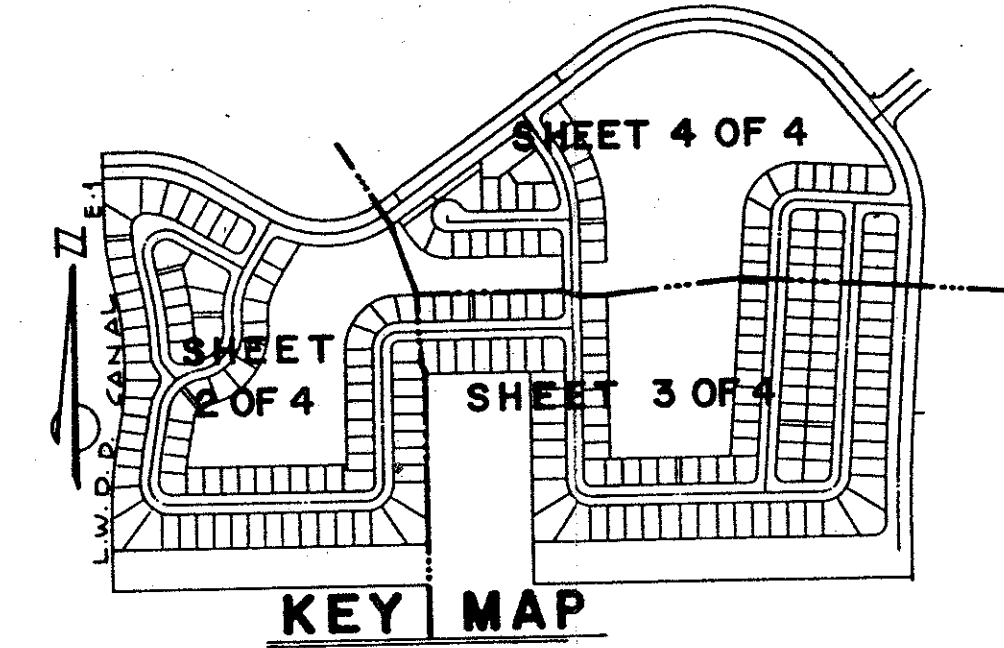


WEITZER SUBDIVISION P.U.D. PLAT NO. TWO

(MOON LAKE P.U.D.)

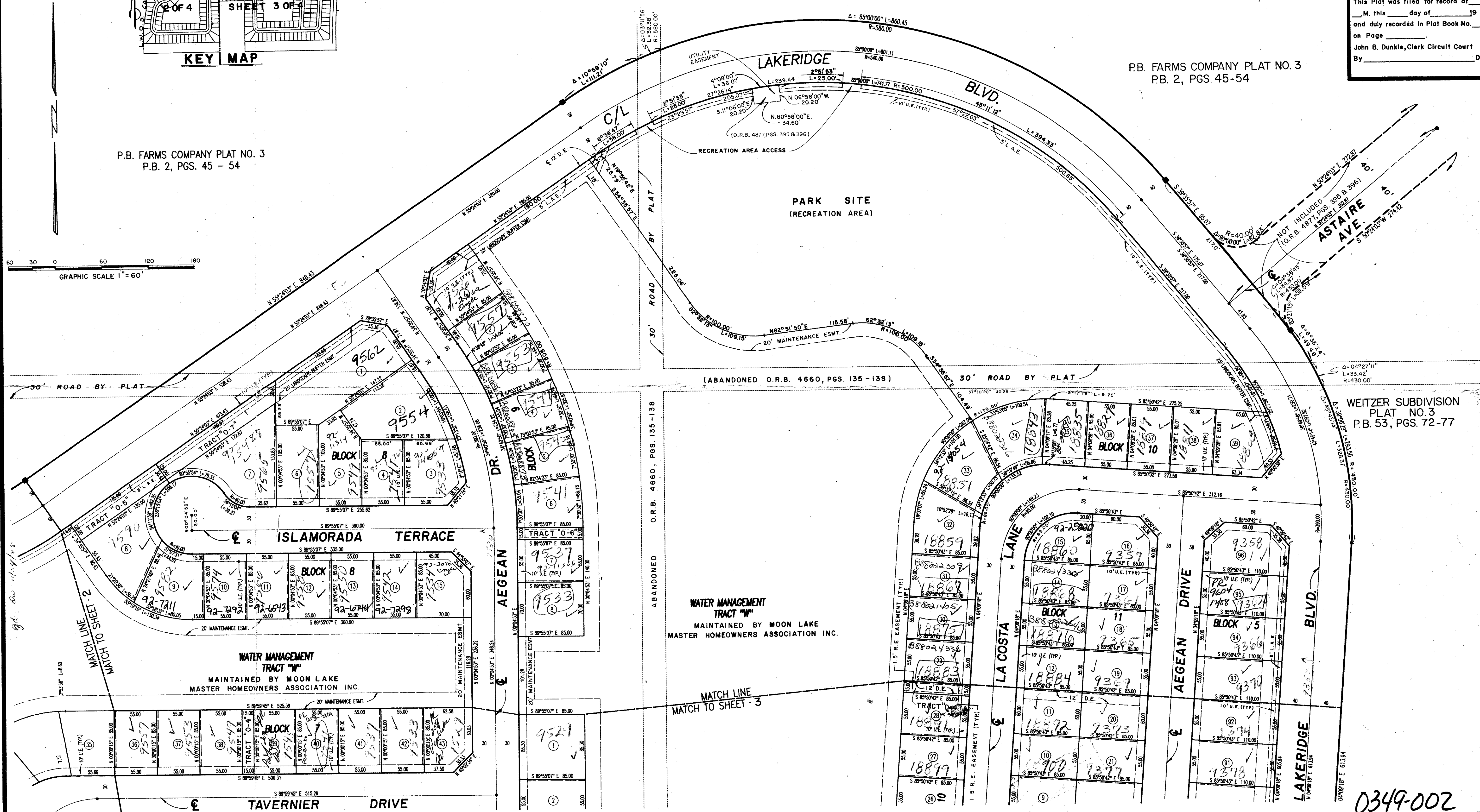
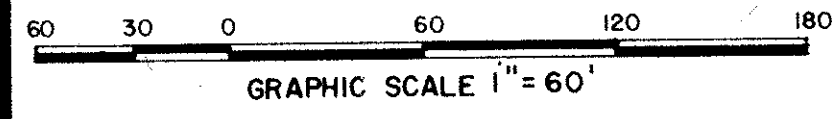
A REPLAT OF A PORTION OF BLOCK 73, PALM BEACH FARMS PLAT NO. 3, PLAT BOOK 2, PAGES 45 - 54, IN THE S. 1/2 OF SECTION 6 & THE N. 1/2 OF SECTION 7, TWP. 47 S. - RGE. 42 E., PALM BEACH COUNTY, FLORIDA
SHEET 4 OF 4
JULY, 1988.



P.B. FARMS COMPANY PLAT NO. 3
P.B. 2, PGS. 45 - 54

P.B. FARMS COMPANY PLAT NO. 3
P.B. 2, PGS. 45-54

STATE OF FLORIDA
COUNTY OF PALM BEACH
This Plat was filed for record at _____ M. this _____ day of _____ 19____ and duly recorded in Plat Book No. _____ on Page _____
John B. Dunkle, Clerk Circuit Court
By _____ D.C.



172-767

WEITZER SUBDIVISION
PLAT NO. 3
P.B. 53, PGS. 72-77

0349-002

60/183
WEITZER SUB. PUD # 2

MICHAEL B. SCHORAH & ASSOCIATES, INC.
ENGINEERS • PLANNERS • DEVELOPMENT CONSULTANTS

TEL. (305) 968-0080
1850 FOREST HILL BLVD., SUITE 205
WEST PALM BEACH, FLORIDA 33406